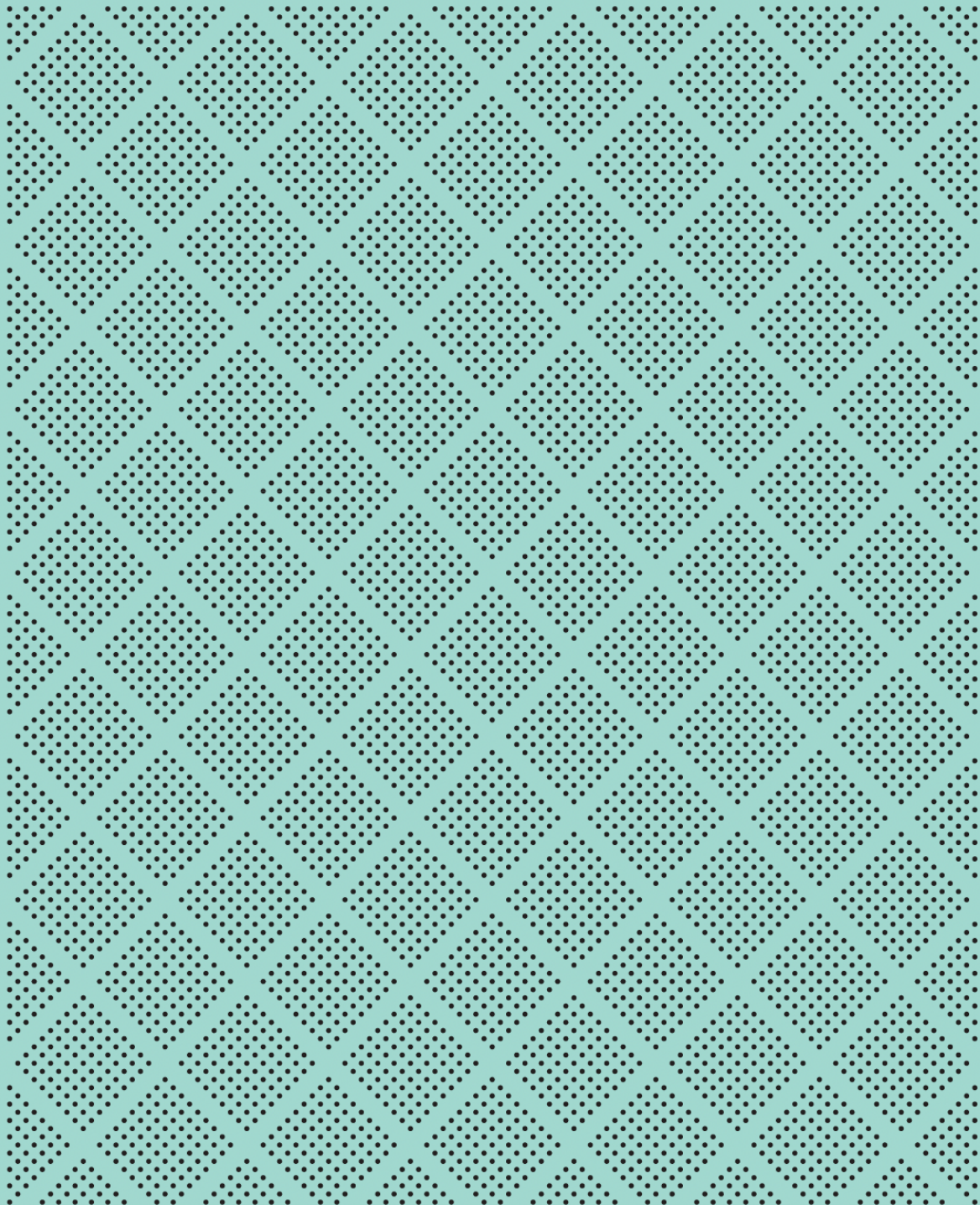


# Monthly Fund Fact Sheets Single Sector Funds



SINGLE SECTOR FUND



# Mint Australasian Equity Fund



CERTIFIED BY RIAA

## Investment Objective

The fund aims to provide investors with long-term capital growth by investing in Australian and New Zealand listed equities. The objective is to outperform the S&P/NZX50 Gross Index after fees and expenses, over the medium to long term.

The Mint Australasian Equity Fund has been certified by the Responsible Investment Association Australasia according to strict disclosure practices required under the Responsible Investment Certification Program<sup>1</sup>.

## Performance

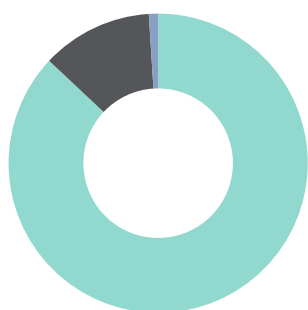
Rolling periods	1 month	3 months	1 Year	3 Years	5 Years	10 Years	Since inception
Mint Australasian Equity Fund	1.81%	2.00%	21.14%	-0.07%	3.91%	8.81%	8.55%
S&P/NZX50 Gross Index	1.73%	1.88%	17.49%	-1.19%	3.22%	8.90%	6.69%

Calendar Years	YTD	2023	2022	2021	2020	2019	2018
Mint Australasian Equity Fund	10.30%	4.33%	-12.33%	-1.46%	15.64%	26.74%	5.45%
S&P/NZX50 Gross Index	7.38%	2.59%	-11.97%	-0.44%	13.92%	30.42%	4.92%

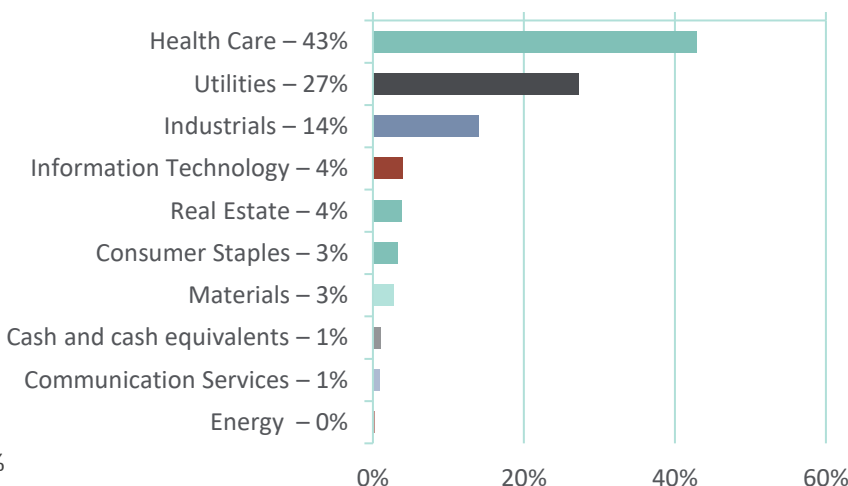
Performance returns greater than 3 months are per annum. Returns are after fees and before investor tax. Net after tax performance can be found in the latest Quarterly Fund Update, available on our website.

## Asset Exposures



- New Zealand Equities – 87%
- Australian Equities – 12%
- Cash and Cash Equivalents – 1%

## Sector Allocation



## Latest Risk Indicator



## Key Fund Facts

Date of Inception:	15 February 2007
Fund Size:	\$214 million
Unit Price:	\$4.2423
Number of Holdings:	28
Benchmark:	S&P/NZX50 Gross Index
Latest FX Hedging:	100%
Total fund fee:	1.19%

## Largest Active Weights

### Top 5 Overweight

Summerset Group Holdings Limited

Telix Pharmaceuticals Limited

CSL Limited

Infratil Limited

Meridian Energy Limited

### Top 5 Underweight

Mercury NZ Limited

Spark New Zealand Limited

Auckland International Airport Limited

Chorus Limited

Goodman Property Trust Units



### Portfolio Manager, John Middleton

BA

John has more than two decades of experience and joined Mint from ANZ Investments where he was Head of Australasian Equity Research. During this time, he was also heavily involved in corporate broking.

At Mint, John is Portfolio Manager for the Australasian Equity Fund and the Australasian Property Fund and provides research coverage across a number of sectors.

SINGLE SECTOR FUND



# Mint New Zealand SRI Equity Fund

The Mint NZ SRI Equity Fund has been certified by the Responsible Investment Association Australasia according to strict disclosure practices required under the Responsible Investment Certification Program<sup>1</sup>. CERTIFIED BY RIAA



## Investment Objective

The fund aims to provide investors with long-term capital growth by investing in New Zealand listed equities. The Fund has been designed to meet specific responsible investment criteria, with the aim of building a portfolio where the holdings in aggregate, generate a better ESG score in our systems than the benchmark. The objective is to outperform the S&P/NZX50 Gross Index after fees and expenses over the medium to long term.

## Performance

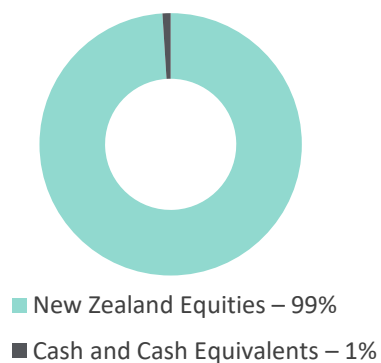
Rolling periods	1 month	3 months	1 Year	3 Years	5 Years	10 Years	Since inception
Mint New Zealand SRI Equity Fund	2.74%	3.80%	16.75%	-1.34%	4.16%	n/a	7.09%
S&P/NZX50 Gross Index	1.73%	1.88%	17.49%	-1.19%	3.22%	8.90%	6.57%

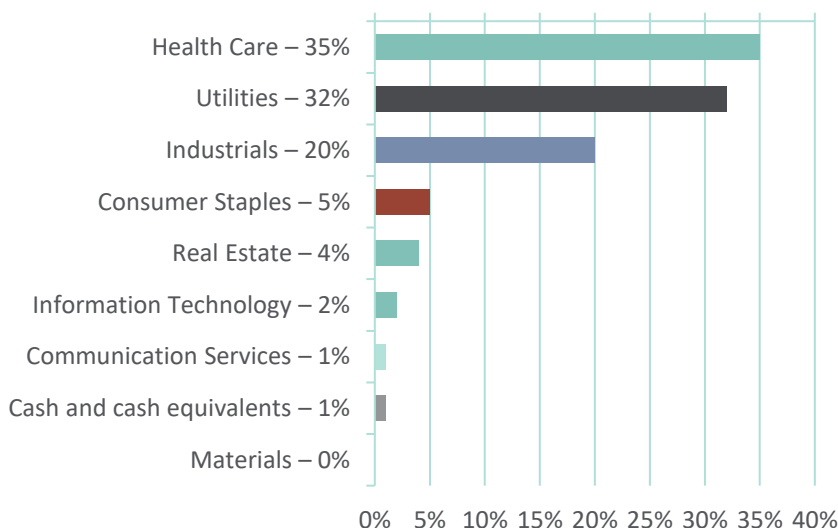
Calendar Years	YTD	2023	2022	2021	2020	2019	2018
Mint New Zealand SRI Equity Fund	7.76%	3.67%	-12.47%	0.28%	17.48%	28.85%	5.94%
S&P/NZX50 Gross Index	7.38%	2.59%	-11.97%	-0.44%	13.92%	30.42%	4.92%

Performance returns greater than 3 months are per annum. Returns are after fees and before investor tax. Net after tax performance can be found in the latest Quarterly Fund Update, available on our website.

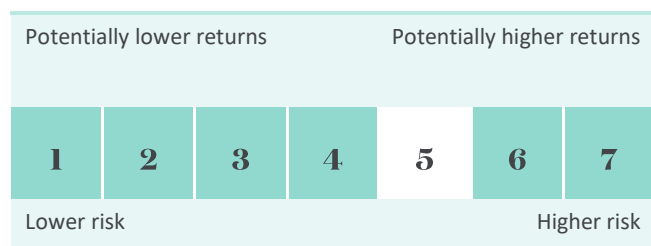
## Asset Exposures



## Sector Allocation



## Latest Risk Indicator



## Key Fund Facts

Date of Inception:	19 June 2017
Fund Size:	\$95 million
Unit Price:	\$1.621
Number of Holdings:	24
Benchmark:	S&P/NZX50 Gross Index
Total fund fee:	0.95%

## Largest Active Weights

### Top 5 Overweight

Summerset Group Holdings Limited
Infratil Limited
Contact Energy Limited
Mainfreight Limited
EBOS Group Limited

### Top 5 Underweight

Mercury NZ Limited
Chorus Limited
Spark New Zealand Limited
Fletcher Building Limited
Auckland International Airport Limited



### Portfolio Manager, David Fyfe

**BCom (Hons.), CFA**

David has over 15 years' experience in the financial industry. Previously he worked at BT Funds Management (NZ) as both a Quantitative and Equity Analyst undertaking sector research specialising in Transportation, Utilities and Technology in both New Zealand and Australian markets.

At Mint, David is the Portfolio Manager for the NZ SRI Equity Fund and the Australasian Property Fund and provides research across a number of sectors.

## SINGLE SECTOR FUND



# Mint Australasian Property Fund

## Investment Objective

The fund aims to provide investors with long-term capital growth by investing in New Zealand and Australian listed property and property related securities. The Fund has an investment objective of outperforming the S&P/NZX All Real Estate (Industry Group) Gross Index after fees and expenses, over the medium to long term.

## Performance

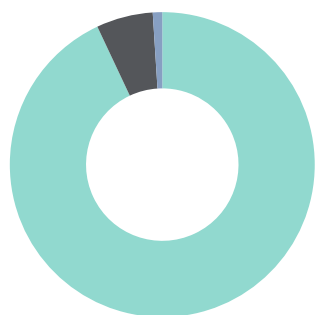
Rolling periods	1 month	3 months	1 Year	3 Years	5 Years	10 Years	Since inception
Mint Australasian Property Fund	1.00%	4.79%	15.41%	-4.54%	-1.14%	5.36%	5.20%
S&P/NZX All Real Estate (Industry Group) Gross	1.72%	4.29%	12.53%	-5.43%	-1.94%	6.04%	6.05%

Calendar Years	YTD	2023	2022	2021	2020	2019	2018
Mint Australasian Property Fund	2.33%	7.00%	-22.96%	5.63%	3.52%	28.91%	6.08%
S&P/NZX All Real Estate (Industry Group) Gross	0.72%	5.48%	-22.30%	2.89%	4.41%	31.25%	9.84%

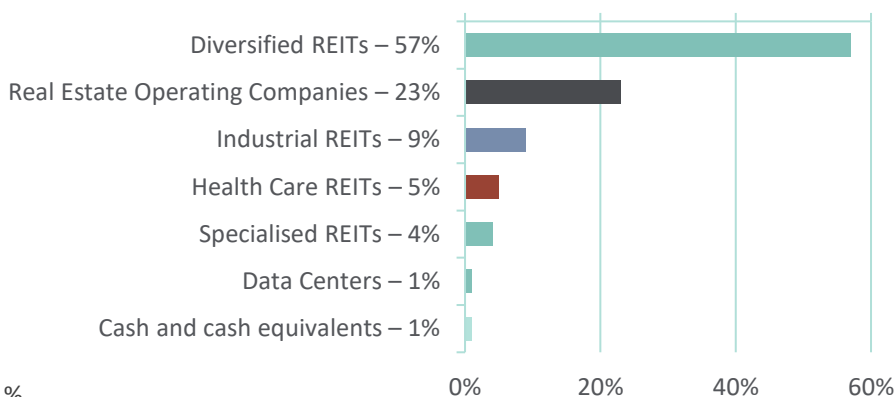
Performance returns greater than 3 months are per annum. Returns are after fees and before investor tax. Net after tax performance can be found in the latest Quarterly Fund Update, available on our website.

## Asset Exposures

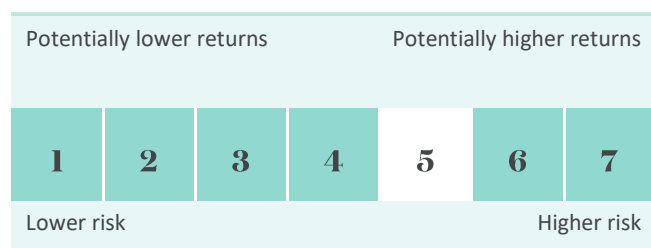


<span style="color: #008080;">■</span> New Zealand Equities – 93%
<span style="color: #000000;">■</span> Australian Equities – 6%
<span style="color: #000080;">■</span> Cash and Cash Equivalents – 1%

## Sector Allocation



## Latest Risk Indicator



## Key Fund Facts

Date of Inception:	1 December 2007
Fund Size:	\$20 million
Unit Price:	\$2.3486
Number of Holdings:	13
Benchmark:	S&P/NZX All Real Estate (Industry Group) Gross Index
Latest FX Hedging:	99%
Total fund fee:	1.05%

## Largest Active Weights

### Top 5 Overweight

Stride Property Group	Argosy Property Limited
Summerset Group Holdings Limited	Vital Healthcare Property Trust
Kiwi Property Group Limited	Property For Industry Limited
Goodman Group	Investore Property Limited
Precinct Properties NZ Limited	Goodman Property Trust Units

### Top 5 Underweight



### Portfolio Manager, John Middleton

BA

John has more than two decades of experience and joined Mint from ANZ Investments where he was Head of Australasian Equity Research. During this time, he was also heavily involved in corporate broking.

At Mint, John is Portfolio Manager for the Australasian Equity Fund and the Australasian Property Fund and provides research coverage across a number of sectors.



### Portfolio Manager, David Fyfe

BCom (Hons.), CFA

David has over 15 years' experience in the financial industry. Previously he worked at BT Funds Management (NZ) as both a Quantitative and Equity Analyst undertaking sector research specialising in Transportation, Utilities and Technology in both New Zealand and Australian markets.

At Mint, David is the Portfolio Manager for the NZ SRI Equity Fund and the Australasian Property Fund and provides research across a number of sectors.

## Responsible Investing

For additional information on our Responsible Investing activities, please refer to our website where you will find our Responsible Investing Policy, Stewardship Policy, Proxy Voting Statistics and our Quarterly Sustainability Report: [Responsible Investing | Mint Asset Management](#)

The Mint NZ SRI Fund latest ESG score can be found here: [NZ SRI Fund Overview](#)

### <sup>1</sup>RIAA Certification Disclaimer

RIAA's RI Certification Symbol signifies that a product or service offers an investment style that takes into account environmental, social, governance or ethical considerations. The Symbol also signifies that the Mint Australasian Equity Fund and the Mint New Zealand SRI Equity Fund adhere to the operational and disclosure practices required under the Responsible Investment Certification Program for the category of Product. The Certification Symbol is a Trademark of the Responsible Investment Association Australasia (RIAA). Detailed information about RIAA, the Symbol and the Mint Australasian Equity Fund and Mint New Zealand SRI Equity Fund methodology, performance and stock holdings can be found at [www.responsiblereturns.com.au](http://www.responsiblereturns.com.au), together with details about other responsible investment products certified by RIAA. \*\*

\*\*The Responsible Investment Certification Program does not constitute financial product advice. Neither the Certification Symbol nor RIAA recommends to any person that any financial product is a suitable investment or that returns are guaranteed. Appropriate professional advice should be sought prior to making an investment decision. RIAA does not hold an Australian Financial Services Licence.

Signatory of:



TOITŪ



ISO 14064-1  
ORGANISATION



STEWARDSHIP CODE  
AOTEAROA NEW ZEALAND



Responsible  
Investment  
Association  
Australasia

**For more information on  
our Funds, please contact:**

Level 29, SAP Tower  
151 Queen Street, Auckland  
New Zealand

**P** 0800 646 833

**E** [info@mintasset.co.nz](mailto:info@mintasset.co.nz)

[www.mintasset.co.nz](http://www.mintasset.co.nz)